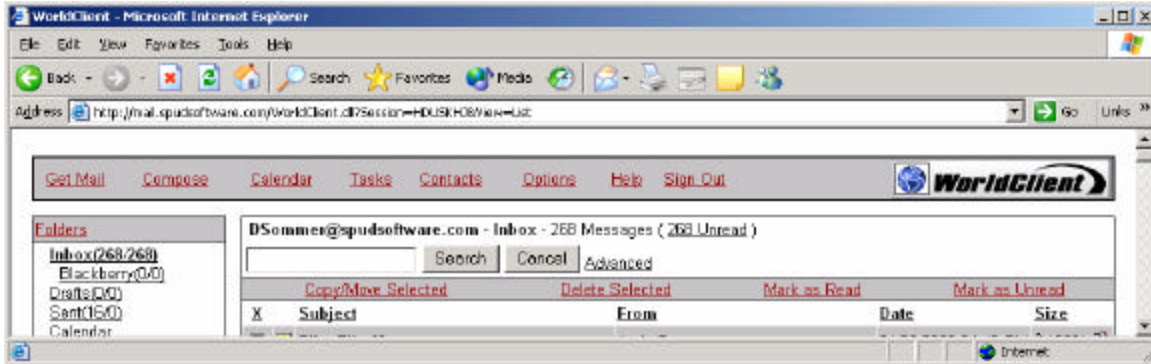
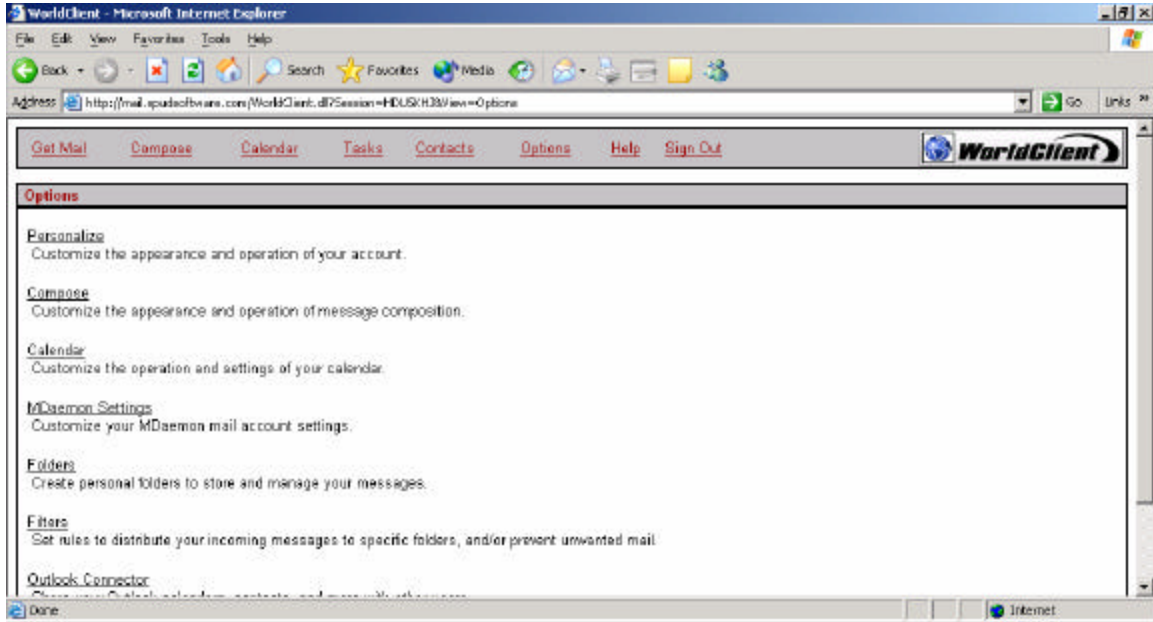


The WorldClient software allows you to choose from 5 different ways to view your mail.

If you want to change the view, simply click the options link/button after you have signed into WorldClient. Depending on the current theme/view you are using the link/button could be located in the top, left, bottom or right of the WorldClient screen.



After you clicked Options, Click Personalize



On the Personalize screen you will see a Theme drop down. Pick the Theme you want to change your view to. Depending on the current Theme/View the program may automatically go back to the mail screen with the new look. If not, click the save link.

